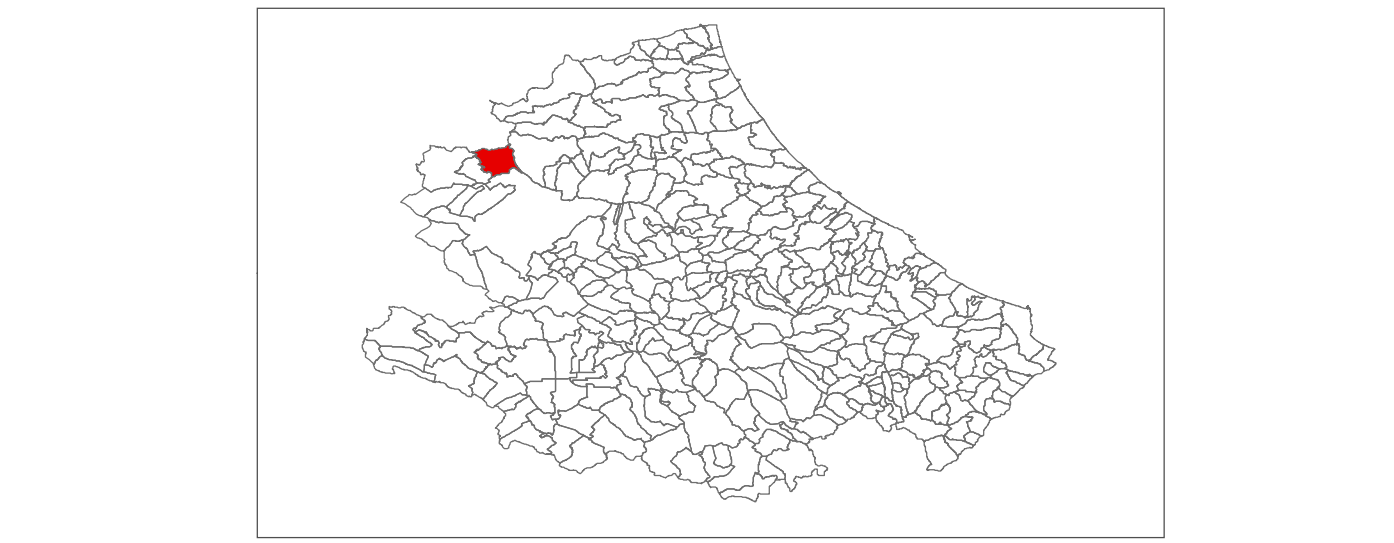


MICROZONAZIONE SISMICA

Carta delle Microzone Omogenee in Prospettiva Sismica

scala 1:5.000

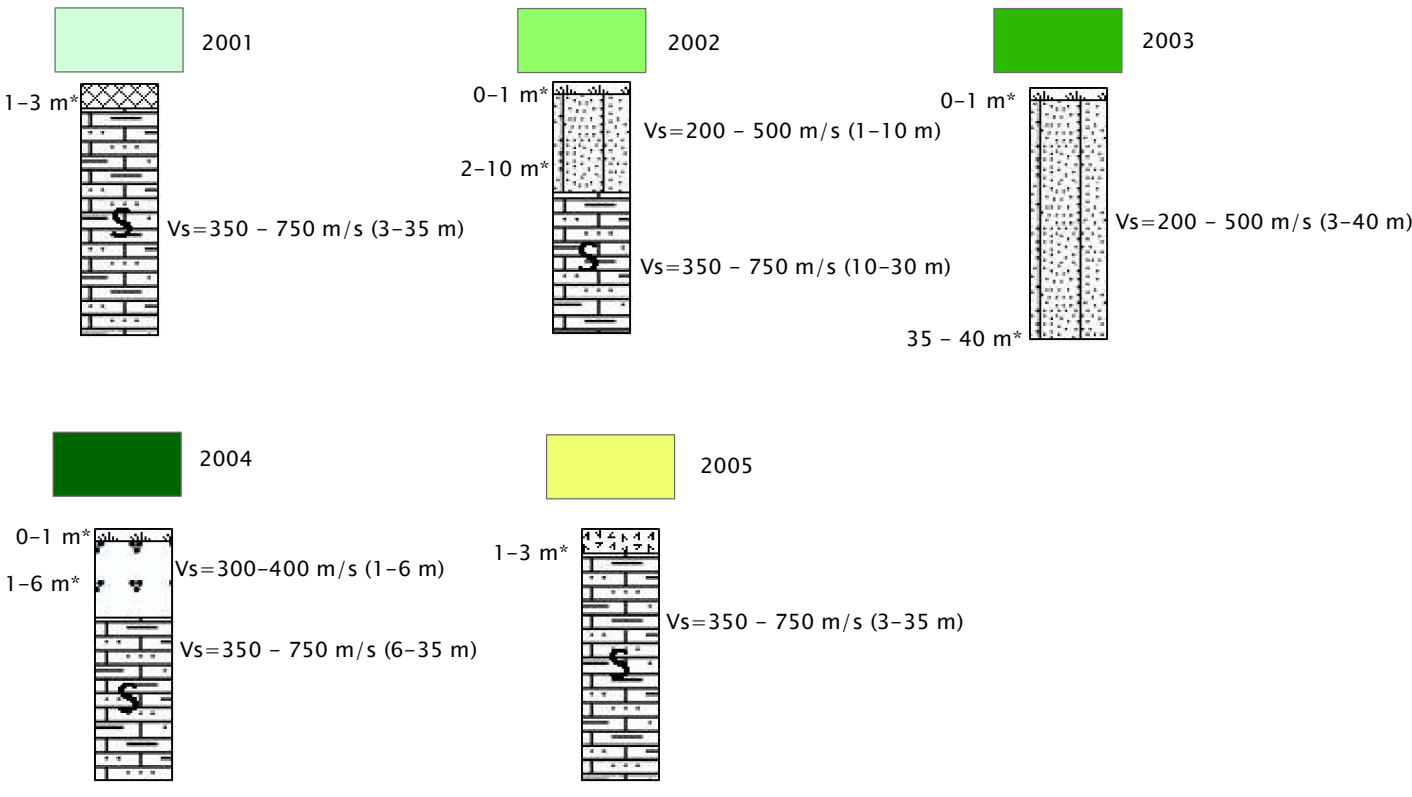
REGIONE ABRUZZO
Comune di Campotosto (AQ)



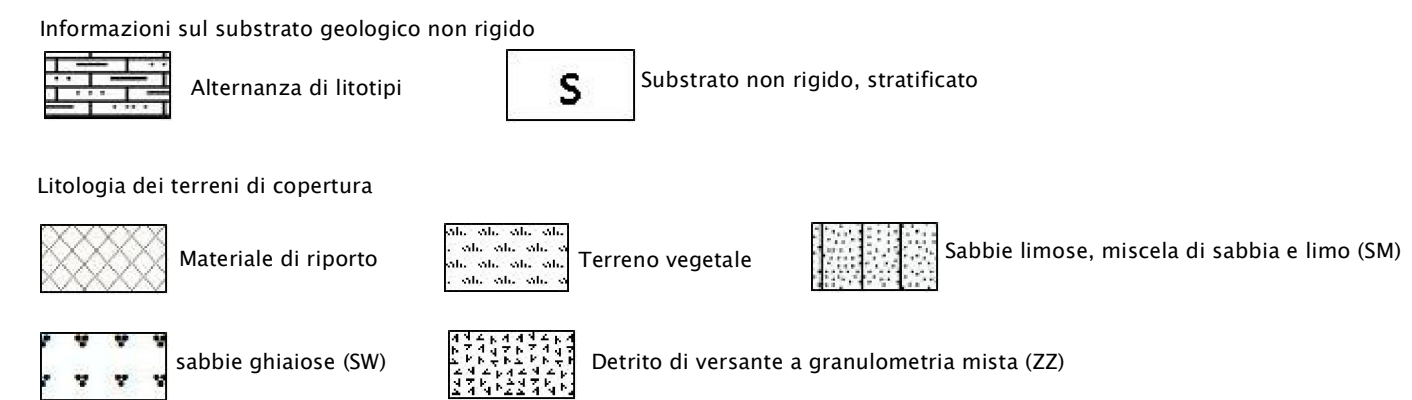
Regione	Soggetto realizzatore Dott. Geol. Katia D'Onofrio	Data
		Ottobre 2012
	Collaboratore: Dott. ANA MARIA JUUETA GRIGORESCU	

Legenda

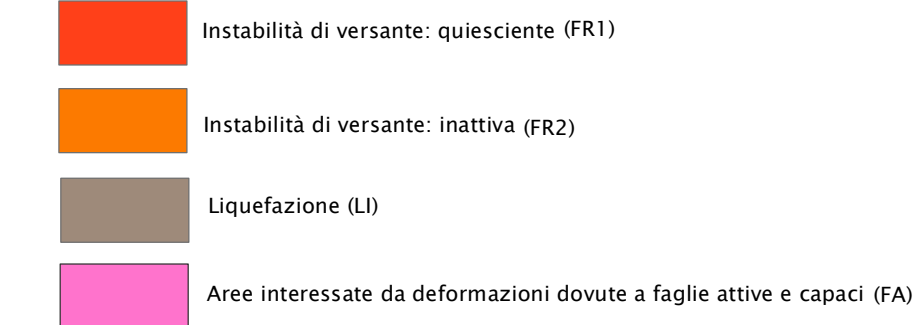
Zone stabili suscettibili di amplificazioni locali



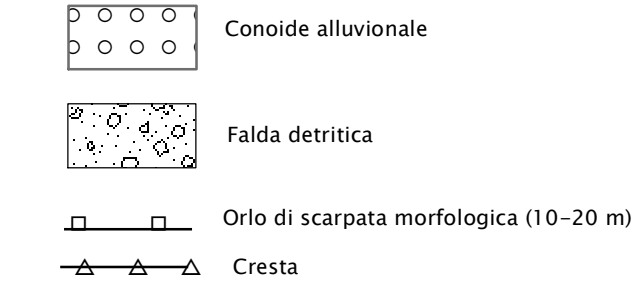
* Spessori valutati dal solo rilevamento geologico e da indagini progressive, quindi soggetti ad incertezza



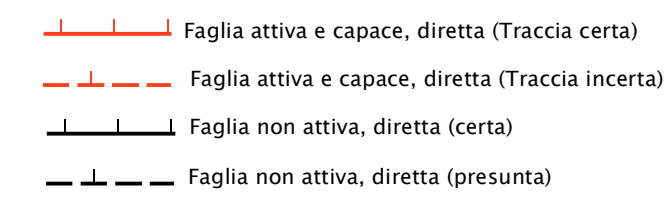
Zone suscettibili di instabilità



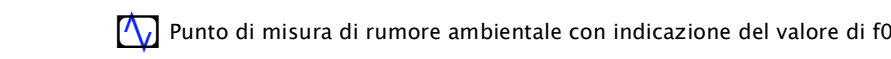
Forme di superficie e sepolte



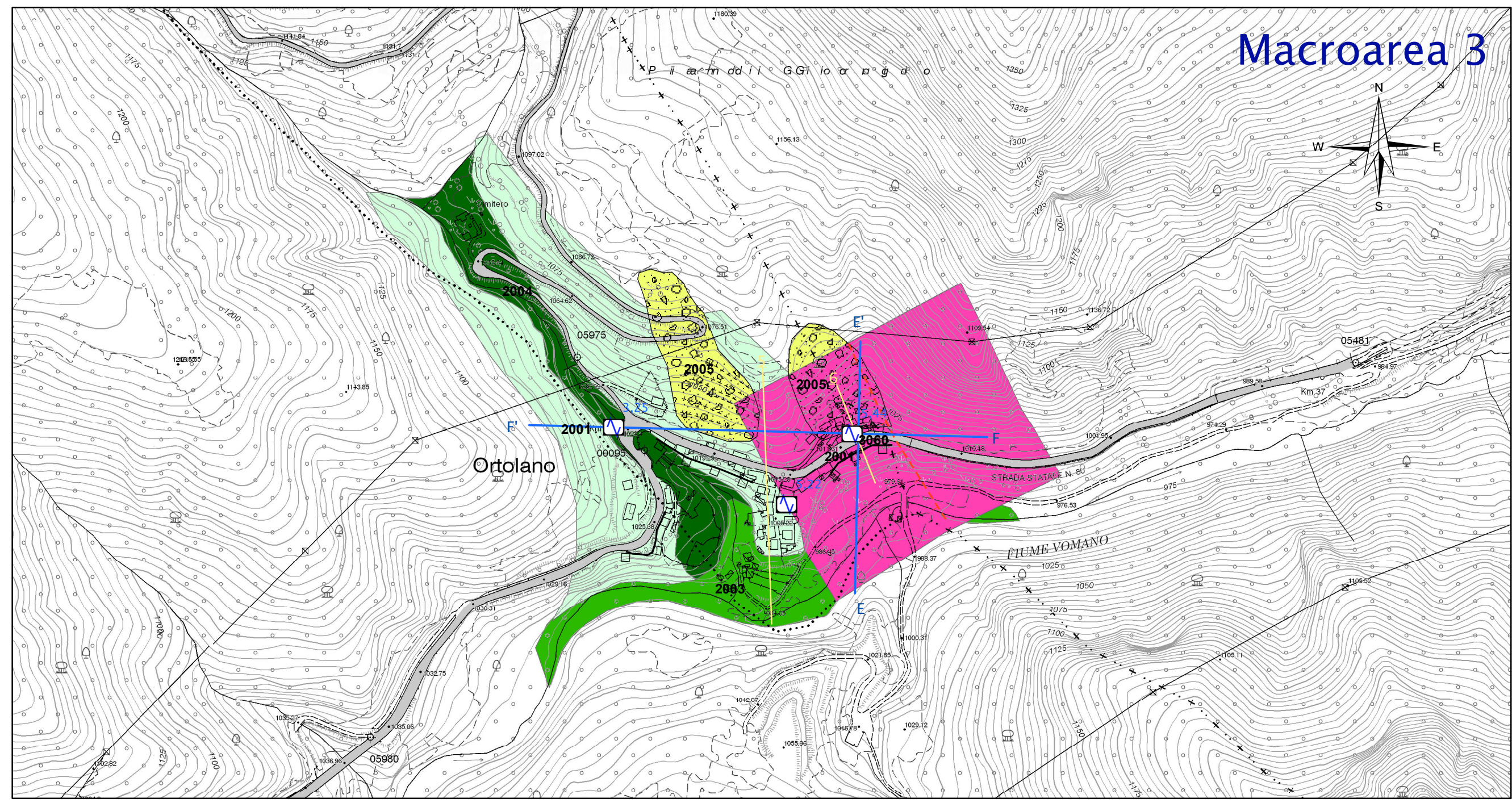
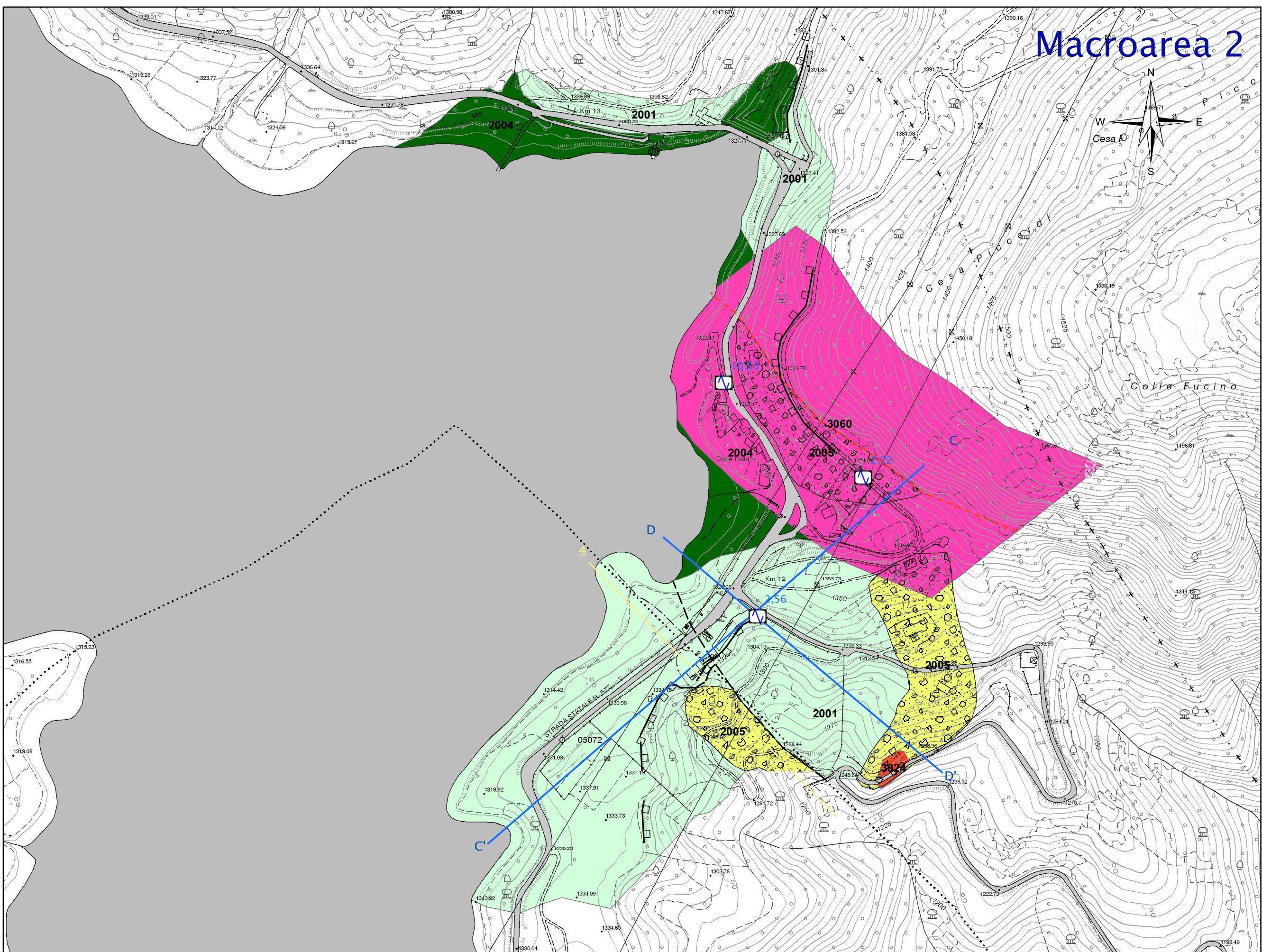
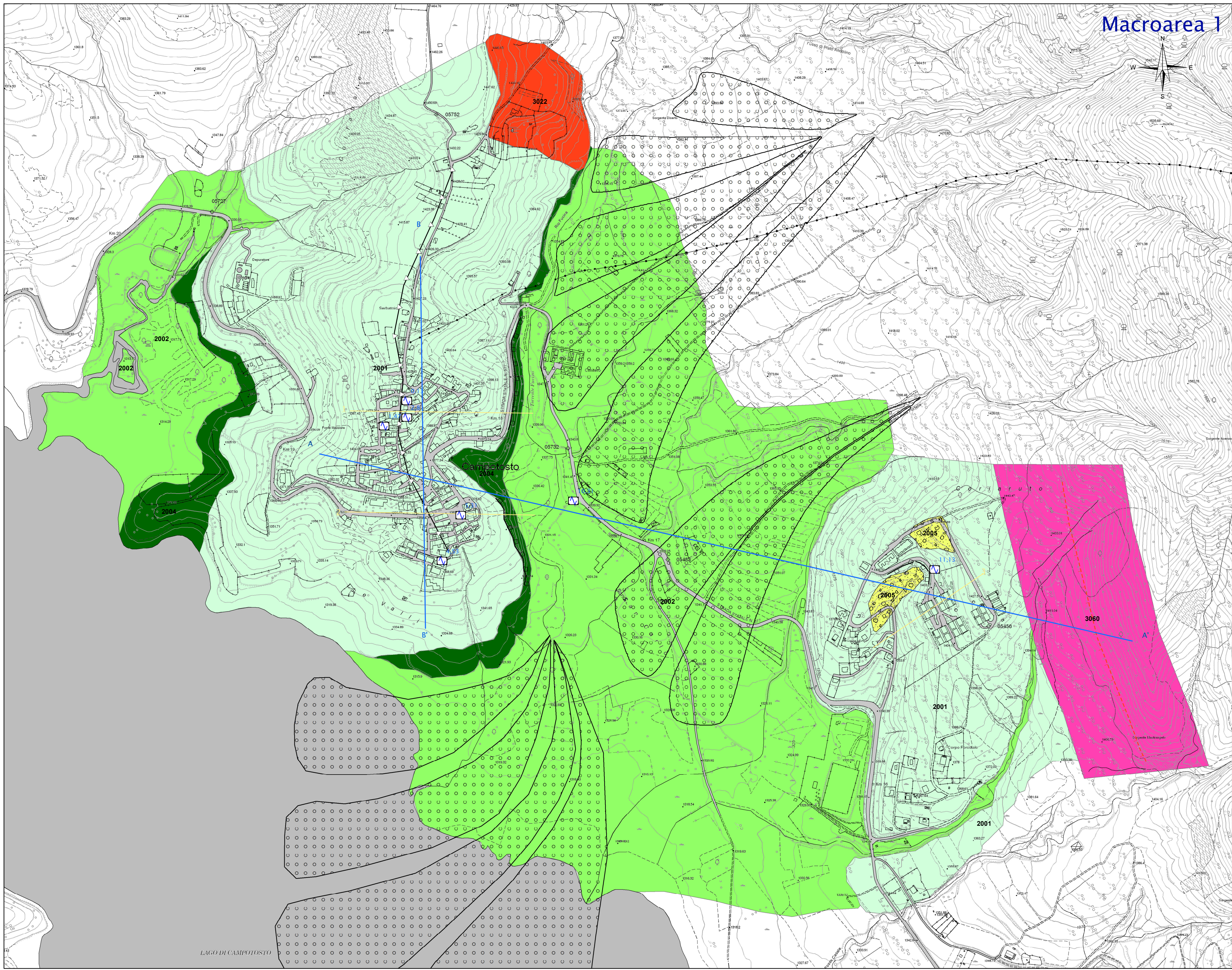
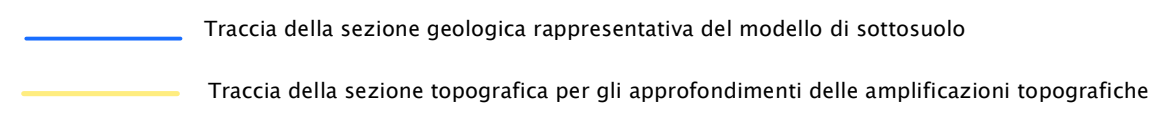
Elementi strutturali



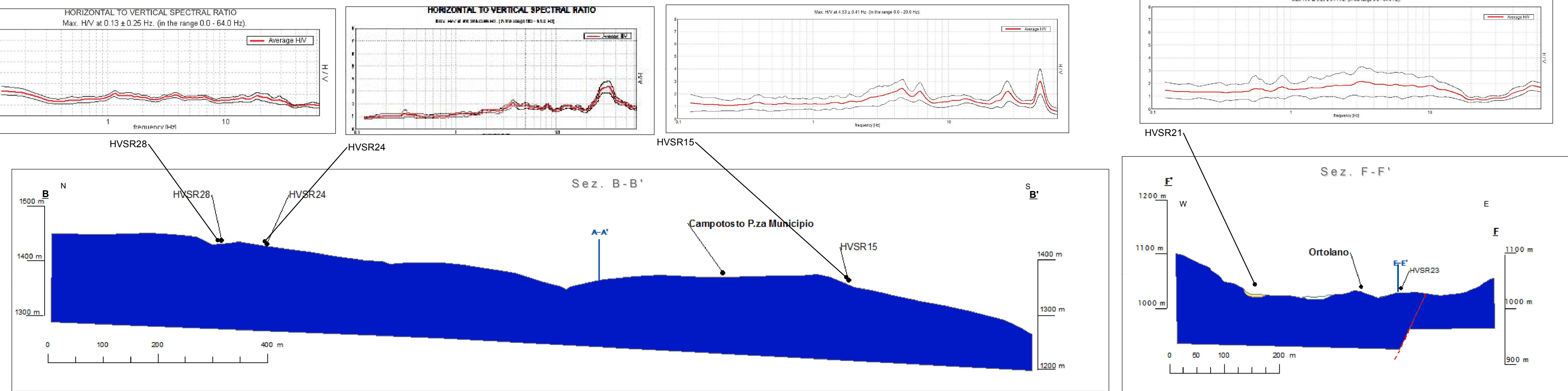
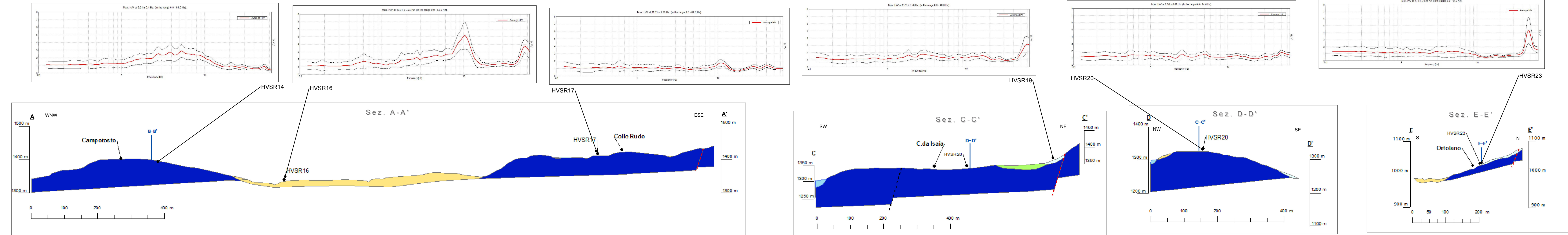
Punti di misura di rumore ambientale



Altri elementi lineari



Sezioni Geologiche - Tecniche



Sezioni topografiche

